

2-1

**VIJO JODHPUR IAF JODHPUR, INDIA**  
07 SEP 22 **Eff 13 JUL 24** VOR Z RWY 05

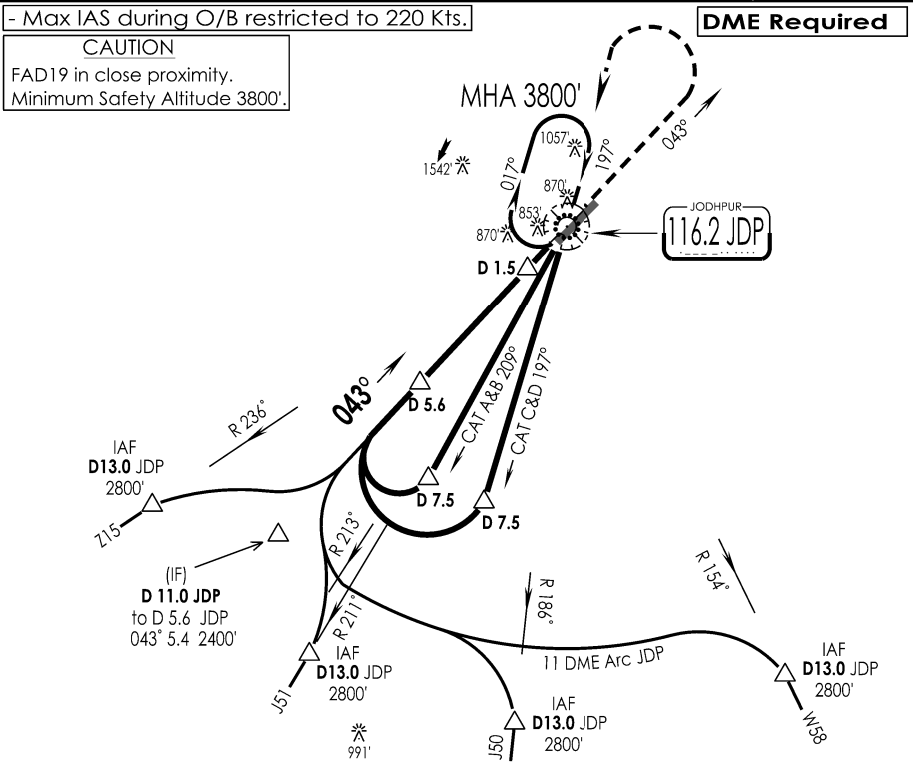
JODHPUR Tower 122.4, VC		JODHPUR Approach 121.8, UC		ATIS 116.2	
VOR JDP <b>116.2</b>	FINAL Apch Crs <b>043°</b>	FAF <b>D 5.6 JDP</b> <b>2400'</b>	MDA (H) <b>1100' (388')</b>	Apt Elev 712' RWY 706'	
<b>MISSED APCH:</b> Climb straight ahead to 1500', then climbing turn LEFT to join VOR hold at 3800' or as directed by ATC.					
Alt Set: hPa		Rwy Elev: 25 hPa	Trans level: By ATC	Trans alt: 4000'	MSA JDP VOR

1 Inch = 5.0 NM

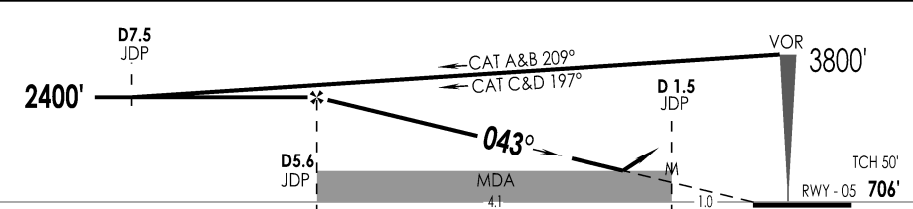
5.0 NM

0

5.0 NM



JDP DME	5.6	5.0	4.0	3.0	2.0	
ALTITUDE (ft)	2400	2210	1900	1580	1260	



GND SPEED KTS	80	100	120	140	160	180	<b>CAT-II PAPI-R</b> ↑ 1500' 3800' LT
DESCENT ANGLE 3.0°	425	531	637	743	849	955	

MAP AT D 1.5 JDP				CIRCLE - TO - LAND			
STRAIGHT-IN LANDING RWY 05				CIRCLING TO LAND			
CDFA							
MDA(H) <b>1100' (388')</b>							
IALS		ALS OUT		Max Kts	MDA (H)	VIS	
A				100	<b>1480' (768')</b>	3800m	
B	RVR 1400m		RVR 1500m	135			
C				180	<b>1940' (1228')</b>	5000m	
D			RVR 1800m	205			

CHANGES : NEW PROCEDURE IPDC, DTE OF OPS (T & H)

SURVEY PERIOD : 2021 - 22